

# Griffith College's lectures returning to campus

Updated: 10 December, 16:40

**From December 2nd, the college has returned to on-campus teaching, subject to prevailing social distancing requirements and government recommendations.**

We welcome the recent support from the Minister for Higher Education and government party leaders on the need to facilitate more on-campus teaching and related activities for learners.

The college's individual faculties will update you if there are any changes to your schedule to facilitate moving to both on-campus and online delivery.

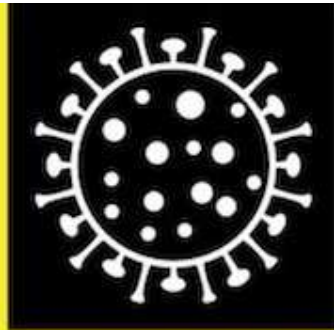
The Students' Union offices have remained open and active during the Level 5 restrictions and we welcome the appointment of newly elected student representatives at both college and class level for 2020/21.

The Students' Union is preparing a comprehensive programme of activities for learners throughout December and January – both within and between the teaching semesters.

Details of the schedule were announced in late November and communicated to students through the SU, the SU Moodle page and class reps.

**For more information on the return to campus for our students, COVID-19 protocols and hybrid learning, please see below.**

[Questions? See our FAQs.](#)



Coronavirus  
**COVID-19**  
Public Health  
Advice

## Ways to keep safe on campus

1. Keep to the left. Follow the one way system



2. When you are not seated at your desk, wear your mask!

3. Regularly wash your hands & use the hand sanitiser located in buildings.



4. Dispose of any tissues used to cover your mouth and nose.

5. Stay a safe distance of 2 metres apart.



**COVID**  
TRACKER

6. Download the Covid Tracker App



Full-Time Students (new and returning)

Lectures will be facilitated on campus with learners attending some of their lectures in-person (as scheduled and advised by their Faculty) and the remaining lectures taking place remotely via live stream. This learning model ensures compliance with social distancing, on-campus attendance and online engagement. All lectures on your programme will also be captured and recorded to Moodle should you be unable to attend either the on-campus or live-streamed lectures.

The engaging hybrid learning model may vary from programme to programme, and applicants are welcome to contact the [admissions team](#) or their programme director for programme-specific information.

Learners who are in Ireland (who do not need a study visa) will have the option to attend live lectures online if they wish to do so.

Our International learners who are beginning their programme from their home country will be able to access all live lectures online as they wait to travel to Ireland, then they will observe 'restricted movement' (this is the new term from the HSE which effectively replaces self-isolation - for further details on restricted movement please click [here](#)) and join physical classes when medically approved to do so.

# WHEN YOU MUST WEAR YOUR MASK



## 1 IN COMMON AREAS

When in the; library, restaurant, corridors & computer rooms.



OPEN LIBRARY



## 2 WHEN MOVING AROUND YOUR LECTURE ROOM

When you need to move from your desk you must wear your mask!



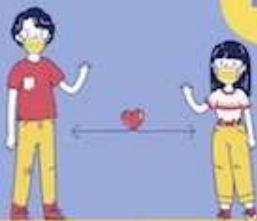
## 3 TOILETS

When using the toilets please wear your mask at all times!



## 4 WHEN YOU CAN'T SOCIALLY DISTANCE & TALKING TO STAFF

When you cannot stay a safe 2 metre distance from other people.



Download the  
**COVID Tracker app**  
at [covidtracker.ie](https://covidtracker.ie)

Stay safe.  
Protect each other.



Part-Time Students (new and returning)

Lectures will be facilitated on campus with learners able to elect to attend face-to-face lectures or to attend remotely via live stream. This learning model ensures compliance with social distancing, on-campus attendance and online engagement. All lectures on your programme will also be captured and recorded to Moodle should you be unable to attend the on-campus or live-streamed lectures.

We understand that part-time learners will require flexibility, so faculties will work with each cohort to identify a suitable balance between on-campus/face-to-face learning and online delivery.

## Blended Students (new and returning)

Live days will be held on campus, with appropriate precautions taken to ensure all participants are socially distanced. For learners unable to attend in person, a live stream option will be available. In addition, all live days will be captured and recorded to Moodle should you be unable to attend the on-campus or live-streamed lectures.

## On Campus (all students)

Our facilities management and housekeeping departments have been working diligently to prepare for the reopening of the College with the safety and wellbeing of our learners, staff, residents and community as a top priority. There will be increased hygiene points and sneeze screens. Lecture rooms, labs and practical spaces are being set up to accommodate prevailing social distancing guidelines.

We wish to provide as much flexibility as possible to learners, so all lectures will be delivered in-person in lecture rooms along with being live-streamed and also recorded for your convenience.

We will continue to keep you updated over the coming weeks.

## Return to Campus COVID-19 Protocols

Thank you for complying with our COVID-19 protocols while on campus, including:

- wearing your mask inside the buildings at all times
- wiping your desk before sitting at it and also after your lecture
- only removing your mask (if you wish to) while you maintain two-meter social distancing and are seated at your desk
- maintaining a two-metre social distance at all times outside the lecture room

Let's all work together to stay safe!

Finally, in order to allow some learners to undertake the programme remotely, we will be recording all lectures. They will be available for review on the appropriate Moodle subject page within 24 hours.

## How to prepare for hybrid learning

Griffith College will be delivering all courses using a hybrid learning model in Semester 1, giving our students the option of attending classes on campus and in person – or by joining those same lectures remotely, via the Zoom classroom. You can see a video guide to Griffith Hybrid at the right.

To prepare for this new mode of learning please follow the guides and instruction on the [Remote Learners page](#).