

Updated
April 2022



GRIFFITH COLLEGE

Est.
1974

7000+
Students

140+
Global Partnership

35,000+
Alumni

7
Faculties

100+
Nationalities

4
Campuses

QUICK PROGRAMME GUIDE

DUBLIN • CORK • LIMERICK

DESIGN | JOURNALISM & MEDIA | ACCOUNTING | BUSINESS
COMPUTING | FILM & TV | HOSPITALITY | LAW
MUSIC | PHARMACEUTICAL SCIENCE | PHOTOGRAPHY

Information correct at time of publishing. Details may change without notice.

ABOUT GRIFFITH COLLEGE

Griffith College was established in 1974 and has four city centre campuses...

DUBLIN

MAIN CAMPUS



Griffith College Dublin is based on a 7-acre campus, offering students a variety of facilities to enhance their learning experience.



CORK

Located in Ireland's second largest city, Griffith College Cork on Wellington Road is a local and iconic landmark, known to generations of Cork people over the last 150 years. The entire campus is situated on approximately 5.5 acres and is a short walk from Cork city centre.

LIMERICK

Limerick is a vibrant, student-focused city. The College, based on O'Connell Avenue, is at the heart of the city. Griffith College Limerick deliver programmes in Business, Computing, Hospitality, Accounting, and professional qualifications. As a student, you will receive individual attention from our first-rate lecturers, with smaller class sizes and a supportive learning environment.



FIND OUT MORE



#GriffithGlobal

QUICK PROGRAMME GUIDE

CERTIFICATE OF INTERNATIONAL FOUNDATION STUDIES (CIFS)

Title	Level	Duration*	Intake/ Location*
CIFS Business	5	9 months	● ●
CIFS Science	5	9 months	● ●
CIFS Engineering & Technology	5	9 months	● ●

* Intakes may not align with UG/PG intake dates. Please ask your Griffith representative for most up to-date information

● September Intake
D Dublin Campus

● Spring Intake
C Cork Campus

L Limerick Campus

FACULTY OF BUSINESS



Undergraduate Programmes

Title	Level	Duration*	Intake/ Location*
BA (HONS) in Accounting & Finance	8	3 years	● ● ● ●
BA (HONS) in Business	8	3 years	● ● ●
BA (HONS) in Business (HRM)	8	3 years	● ●
BA (HONS) in Business (Marketing)	8	3 years	● ● ●
BA (ORD) in Marketing	7	3 years	●
BA (ORD) in Business	7	3 years	●

*Where Spring start available programme shortened by 6 months

Postgraduate Programmes

Title	Level	Duration*	Intake/ Location*
MBA	9	1 year	● ●
MSc in International Business Management	9	1 year	● ●
MSc in International Business (Global Brand Management)	9	1 year	● ●
MSc in International Business (International Business & Law)	9	1 year	● ●
MSc in Procurement and Supply Chain Management	9	1 year	● ●
MSc in International Business (International Tourism and Hospitality Management)	9	1 year	● ●
MSc in Accounting and Finance Management	9	1 year	● ●
MSc in International Pharmaceutical Business Management	9	1 year	● ●

*Where Spring start available programme lengthened by 6 months

● September Intake
D Dublin Campus

● Spring Intake
C Cork Campus

L Limerick Campus



FACULTY OF CREATIVE ARTS AND SCREEN MEDIA



Undergraduate Programmes

Title	Level	Duration*	Intake/Location*	
BA (HONS) in Film, TV and Screen Media Production	8	3 years	D	D
BA in Film, TV and Screen Media Production	7	3 years	D	D
BA (ORD) in Photographic Media	7	3 years	D	D
Certificate in Photography	6	1 year	D	D

*Where Spring start available programme lengthened by one semester

- September Intake
- Spring Intake
- D Dublin Campus
- C Cork Campus
- L Limerick Campus

FACULTY OF JOURNALISM AND MEDIA COMMUNICATIONS



Undergraduate Programmes

Title	Level	Duration*	Intake/Location*	
BA (HONS) in Communications and Media Production	8	3 years	D	D
BA (HONS) in Music Production	8	3 years	D	
BA (HONS) in Audio and Music Technology	8	3 years	D	
BA (HONS) in Creative Technologies and Digital Art	8	3 years	D	
BA (ORD) in Communications	7	3 years	D	D
BA (ORD) in Animation	7	3 years	D	
Certificate in Animation	6	1 year	D	

*Where Spring start available programme lengthened by one semester

Interview required

Postgraduate Programmes

Title	Level	Duration*	Intake/Location*	
MA in Journalism and Media Communications	9	1 year	D	D
MA in Journalism and Public Relations	9	1 year	D	D
MA in TV and Radio Journalism	9	1 year	D	D
MA in Scoring for Film, TV and Interactive Media	9	1 year	D	

*Where Spring start available programme lengthened by 6 months

- September Intake
- Spring Intake
- D Dublin Campus
- C Cork Campus
- L Limerick Campus

FACULTY OF LAW



Undergraduate Programmes

Title	Level	Duration*	Intake/Location*	
LLB (HONS)	8	3 years	D	D

*Where Spring start available programme lengthened by one semester

Postgraduate Programmes

Title	Level	Duration*	Intake/Location*	
LLM in International Law	9	1 year	D	D
LLM in International Commercial Law	9	1 year	D	D
LLM in Human Rights Law	9	1 year	D	D

*Where Spring start available programme lengthened by one semester

● September Intake
D Dublin Campus

● Spring Intake
C Cork Campus

L Limerick Campus

FACULTY OF DESIGN



Undergraduate Programmes

Title	Level	Duration*	Intake/Location*	
BA (HONS) in Interior Architecture	8	3 years	D	
BA (HONS) in Fashion Design	8	3 years	D	
BA (HONS) in Graphic Communication Design	8	3 years	D	
BA (ORD) in Interior Design	7	3 years	D	
BA (ORD) in Fashion Design	7	3 years	D	
BA in Graphic Communication Design	7	3 years	D	
Certificate in Art and Design	6	1 years	D	

Portfolio required

Postgraduate Programmes

Title	Level	Duration*	Intake/Location*	
MSc in Interactive Digital Media	9	1 year	D	D

*Where Spring start available programme lengthened by 6 months

● September Intake
D Dublin Campus

● Spring Intake
C Cork Campus

L Limerick Campus




FACULTY OF COMPUTING SCIENCE



Undergraduate Programmes

Title	Level	Duration*	Intake/Location*	
BSc (HONS) in Computing Science 	8	4 years	D C C	
Streams: SW Development, Games Development, Network Management, Cloud Computing				
BSc (ORD) in Computing Science	7	3 years	D C C	

 6 months internship with additional Griffith College Bursary in Year 3 of programme
 *Where Spring start available programme shortened by 6 months

Postgraduate Programmes

Title	Level	Duration*	Intake/Location*	
MSc in Computing Science	9	1 year	D D	
MSc in Big Data Management and Analytics	9	1 year	D D	
Msc in Network and Information Security	9	1 year	L L	

*Where Spring start available programme lengthened by 6 months

Higher Diploma

Title	Level	Duration*	Intake/Location*	
Higher Diploma in Computing	8	1 year	D D	

All Computing degrees considered for masters entry.
 Students with non computing background may take Higher Diploma in Computing as stand alone programme or for bridging to masters in computing.

● September Intake ● Spring Intake
D Dublin Campus C Cork Campus L Limerick Campus

FACULTY OF SCIENCE



Postgraduate Programmes

Title	Level	Duration*	Intake/Location*	
MSc in Pharmaceutical Business and Techonology	9	1 year	D D	
MSc in Digital Transformation (Life Science)	9	1 year	D D	

*Where Spring start available programme lengthened by one semester

● September Intake ● Spring Intake
D Dublin Campus C Cork Campus L Limerick Campus



INTERNATIONAL FOUNDATION YEAR

Certificate in International Foundation Studies (CIFS)

Entry Requirements

Learners must hold a certificate of secondary education at GCSE Level or equivalent to include a minimum pass grade in mathematics and a minimum pass grade in four other subjects. Learners must have an English level of CERFL B1+/ IELTS 5.0/ IGCSE D or equivalent.

What will I study?

**Semester-order dependent on intake*

Semester 1*		Semester 2*	
Core subjects English 1 Learning, Study and Communication Skills Information Technology 1 Mathematics 1	Electives (choose one) Business Physics	Core subjects English 2 Information Technology 2 Mathematics 2	Electives (choose two) Accounting Chemistry Economics Biology

Duration

	September intake	February intake	March intake**
Total number of weeks	30 weeks	30 weeks	20 weeks
Number of vacation weeks	6 weeks	6 weeks	0 weeks
Number of teaching weeks	24 weeks	24 weeks	20 weeks
English requirement	CERFL B1+/ IELTS 5.0/ IGCSE D or equivalent	CERFL B1+/ IELTS 5.0/ IGCSE D or equivalent	CERFL B2-/ IELTS 5.5/ IGCSE C or equivalent

Study mode

3 hours

One-to-one consultation sessions

12.5 hours

Lectures, laboratories and tutorials in other modules

10 hours

English language

**Average
25.5 contact
hours per
week**

Accelerated programme (March intake)

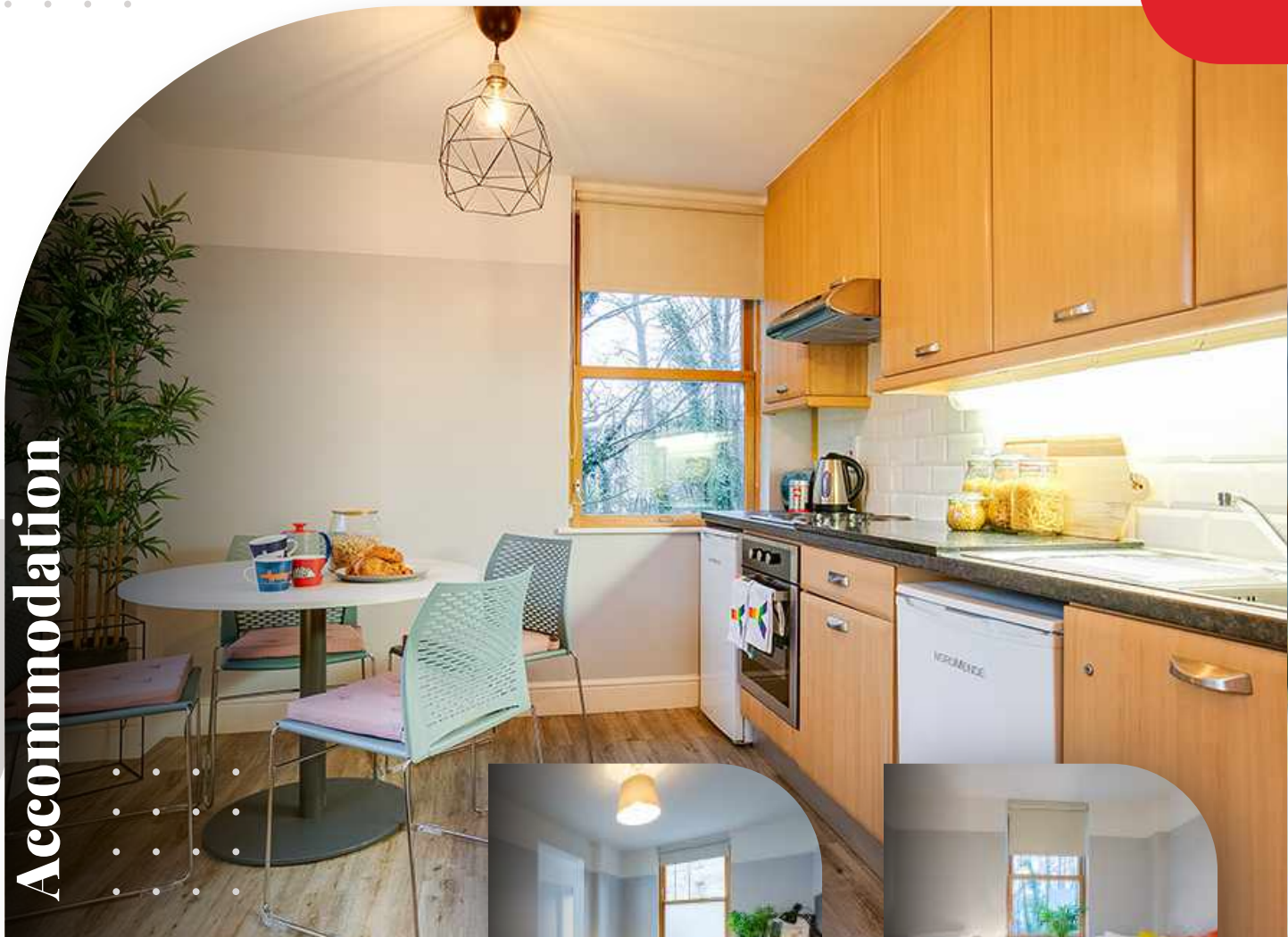
- Progress to selected partners only
- Reduced number of contact hours

*** All intakes subject to minimum numbers.*

*** Subject to approval.*

GRIFFITH HALLS OF RESIDENCE

Dublin Campus Accommodation



Griffith Halls of Residence (GHR) is a purpose-built student accommodation which is located on the grounds of Griffith College Dublin campus. Just 15 minutes walk from Dublin City Centre, GHR boasts an enviable central location that makes it ideal for students.

GHR is built over two blocks comprising of **165 apartments** which provides accommodation for **over 600 students** during the academic year and summer months.

GHR has been sensitively designed to complement and reflect the historical significance of the campus as a whole, while offering comfortable, **modern living with 24 hour security**. Due to the nature of being located on campus, GHR has all the facilities that any student would require including:



Laundry Room



Library Access



Free Parking



Bike Storage



Restaurant



Student Union



Free Wifi



Green Area

TO FIND OUT MORE

EMAIL LIVE@GHR.IE

BOOK NOW