

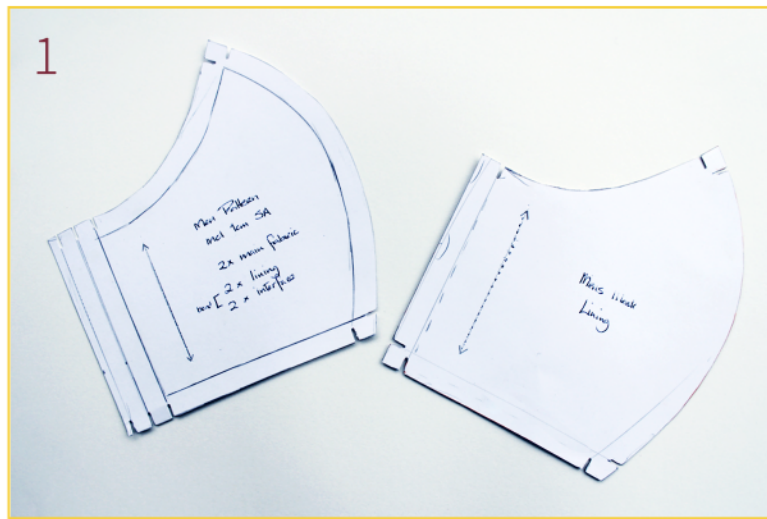
MAKE YOUR OWN MASK STEPS

You will need:
100% Cotton - outer layer
100% Cotton - inner layer
Interfacing
Lace / Cord / Tape
Pipe Cleaner / Wire
Machine



STEPS

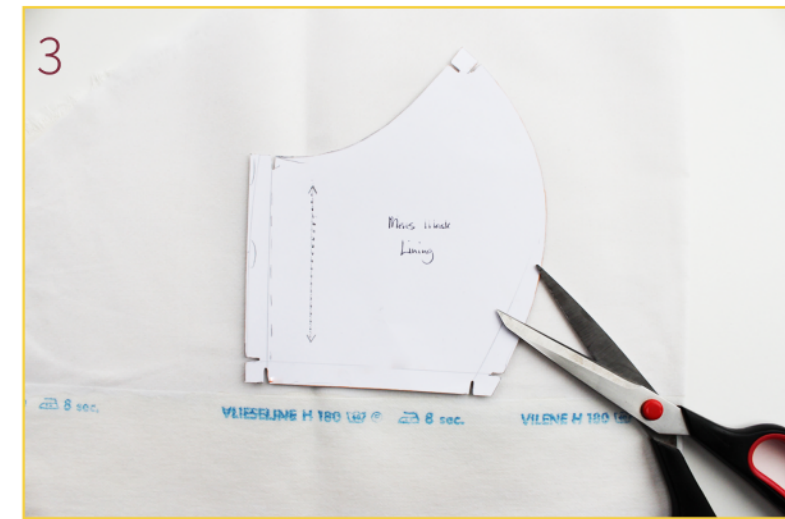
1: Use pdf for pattern and lining pattern



2: Iron interfacing to cotton lining



3: Cut out interfacing and lining



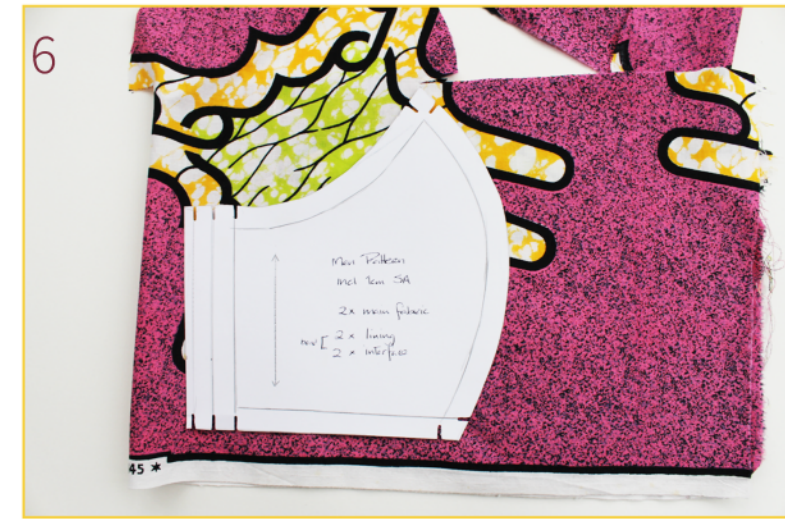
4: Lining x 2 Mirrored



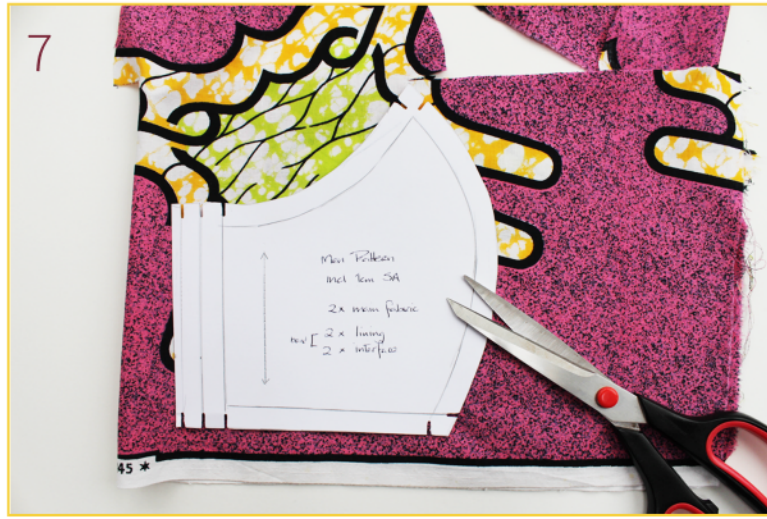
5: Use 100% Cotton fabric for mask



6: Place pattern on the straight of grain



7: Cut pattern x 2



8: Notch pattern pieces



9: Match pieces to mirror each other



STEPS

10: Sew straight stitch so cotton side is touching the skin



11: Snip along curved edge



12: Repeat step for outer layer



13: Press and sew zig zig stitch down centre



14: Repeat step for outer layer



15: Press and turn in lining edges



16: Sew lining to outer layer at top and bottom



17: Cut off extra fabric at top



18: Press both layers



STEPS

19: Press and sew ties chanel outer layer



20: Turn inside out



21: Keep pocket for filters



22: Press, topstitch and sew straight stitch for wire (pipe cleaners) chanel



23: Run wire in for nose shape



24: Snip wire to size and turn in so isn't dangerous



25: Run Tie up and around outer layer tie chanel



26: Knot ends of ties



27: DONE!

